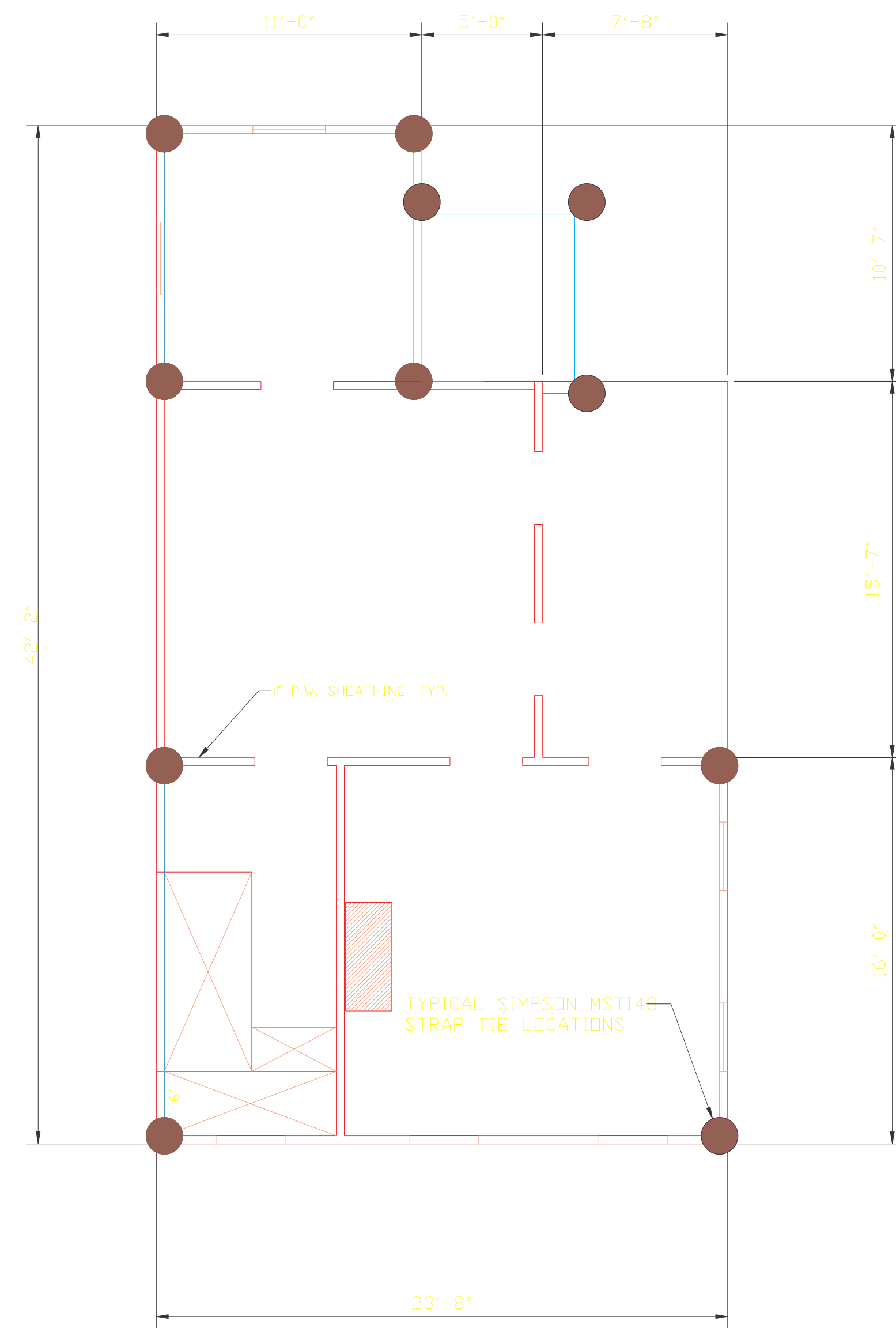
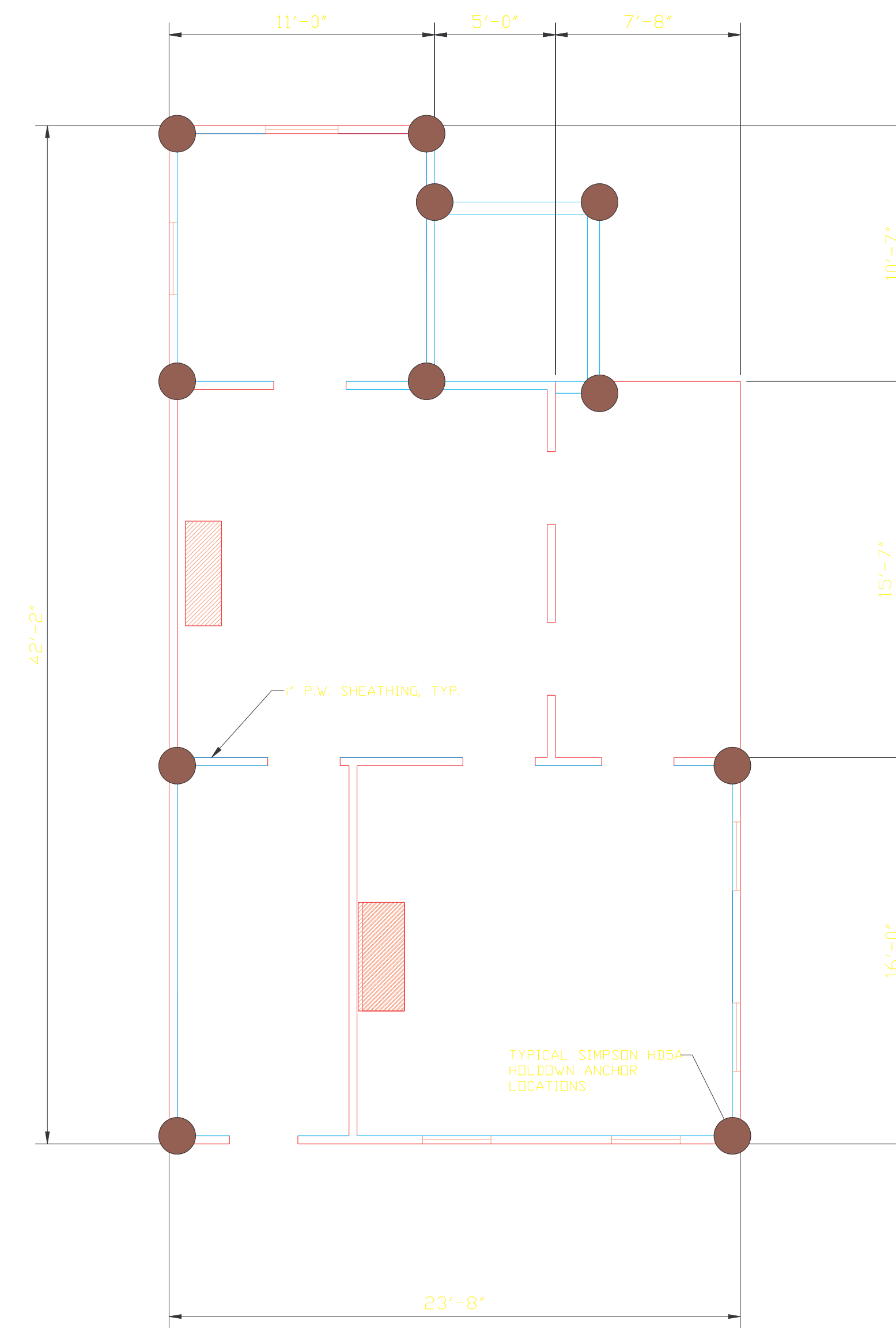


THIRD FLOOR SHEAR WALL PLAN  
r<sup>+</sup> = 1'-0"



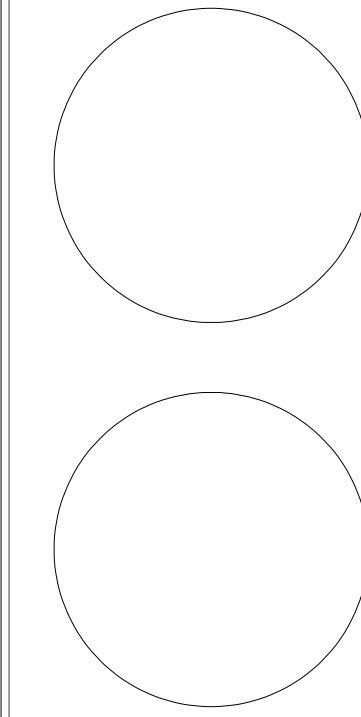
SECOND FLOOR SHEAR WALL PLAN  
r<sup>+</sup> = 1'-0"



FIRST FLOOR SHEAR WALL PLAN  
r<sup>+</sup> = 1'-0"

LENGTH OF SHEARWALLS SHALL BE FULL LENGTH BETWEEN OPENINGS (DOORS AND WINDOWS) OR FROM WALL TO WALL (ABOVE AND BELOW WINDOWS AND ABOVE DOORS). WHERE SHEARWALL TERMINATES OTHER THAN AT OPENING OR WALL THE DISTANCE SHOWN ON PLAN IS MINIMUM DISTANCE REQUIRED. SHEATHING SHALL BE TERMINATED AT THE NEXT AVAILABLE STUD OR CORNER POST. SHEATHING SHALL BE INSTALLED WITH THE LONG AXIS HORIZONTAL.

LOCATE HOLDDOWN ANCHORS AND TIE STRAPS AT NEAREST ACCESSIBLE STUD TO CORNER OR WALL INTERSECTION. SEE DETAILS ON S7.



18 Broad Street  
Charleston, SC  
803 723 1706

C. J. Cantwell  
Architect



3-27-98  
Date

Revisions

Set No

S5  
Sheet No.